

CSA, NRTL/C

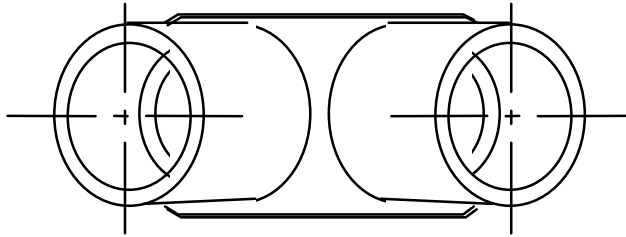
RIGID PVC CONDUIT FITTINGS - KRALOY

PULL ELBOWS, 78385 78386, 178056

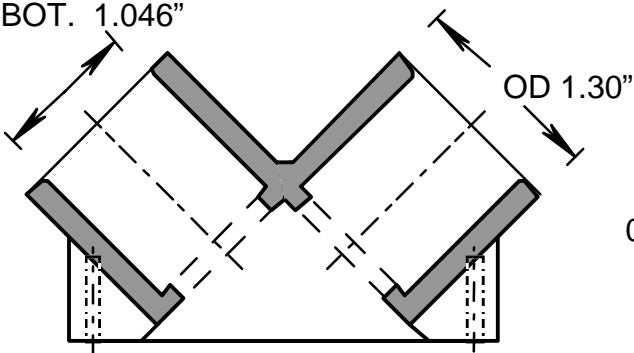
ISSUE DATE:  
DATE D'EMISSION: 2004 01 15

SUPERCEDES:  
REPLACE: 2002 06 20

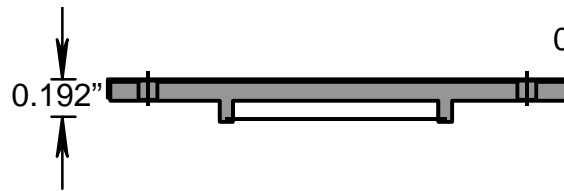
2



ID ENT. 1.064"  
ID BOT. 1.046"



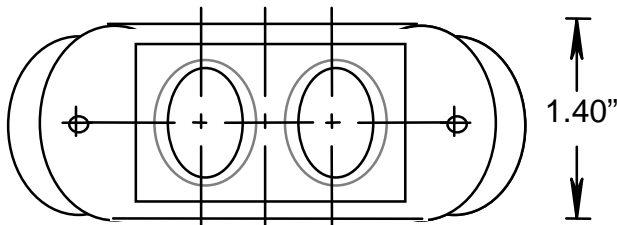
NRTL/C



2.700"

2.375"

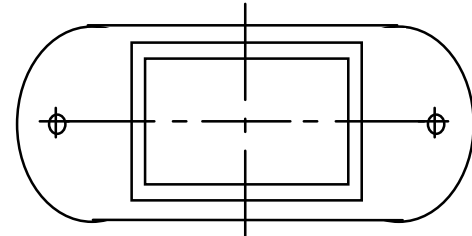
1.300"



1.670"

2.375"

2.700"



1.40"

**PACKAGE LIST**

DESCRIPTION	PART NUMBER	SIZE	QUANTITY
PULL ELBOW BODY AND COVER	097498	3/4" (1/2")	1
PAN COMB SCREW (SELF TAB)	072524	8 X 7/16	2
NEOPRENE GASKET FOR PULL ELBOW	072245	-	1
REDUCER BUSHING	097554	3/4 X 1/2	2

PACKED IN 5" X 8" POLY BAGS

Filename: KRALOY-39.doc  
Directory: \\Bersrvbdc\bergen\QC MANUAL  
Template: C:\Documents and Settings\joelau\Application  
Data\Microsoft\Templates\Normal.dot  
Title: SOCKET DIMENSION  
Subject:  
Author: joe lau  
Keywords:  
Comments:  
Creation Date: 1/2/2001 1:26 PM  
Change Number: 4  
Last Saved On: 1/19/2004 12:36 PM  
Last Saved By: Joe Lau  
Total Editing Time: 4 Minutes  
Last Printed On: 8/8/2005 12:32 PM  
As of Last Complete Printing  
Number of Pages: 1  
Number of Words: 38 (approx.)  
Number of Characters: 223 (approx.)