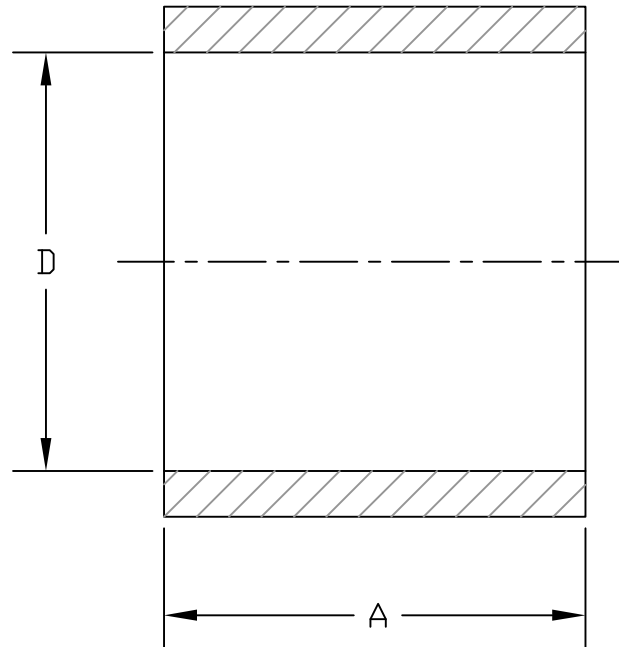


RIGID PVC CONDUIT
CONDUIT RIGIDE EN PVC

RIGID CONDUIT REPAIR COUPLING
CONDUIT RIGIDE EN PVC MANCHON S/ BUTOIR

ISSUE DATE: 2009 09 21
DATE D'EMISSION:

SUPERSEDES: 2005 03 10
REPLACE:



CODE	Size Grosueur	A Ref.	D Min.	D Max.
077292	41mm (1.5")	58mm (2.300")	48.57mm (1.912")	48.87mm (1.924")
077293	53mm (2.0")	61mm (2.405")	60.63mm (2.367")	60.93mm (2.399")
077294	63mm (2.5")	88mm (3.450")	73.23mm (2.883")	73.59mm (2.897")
077295	76mm (3.0")	91mm (3.600")	89.06mm (3.507")	89.48mm (3.523")
077296 078044	103mm (4.0")	100mm (3.920")	114.45mm (4.506")	114.91mm (4.524")
077297	129mm (5.0")	106mm (4.275")	141.81mm (5.583")	142.31mm (5.603")
077298	155mm (6.0")	117mm (4.620")	168.63mm (6.647")	169.39mm (6.669")